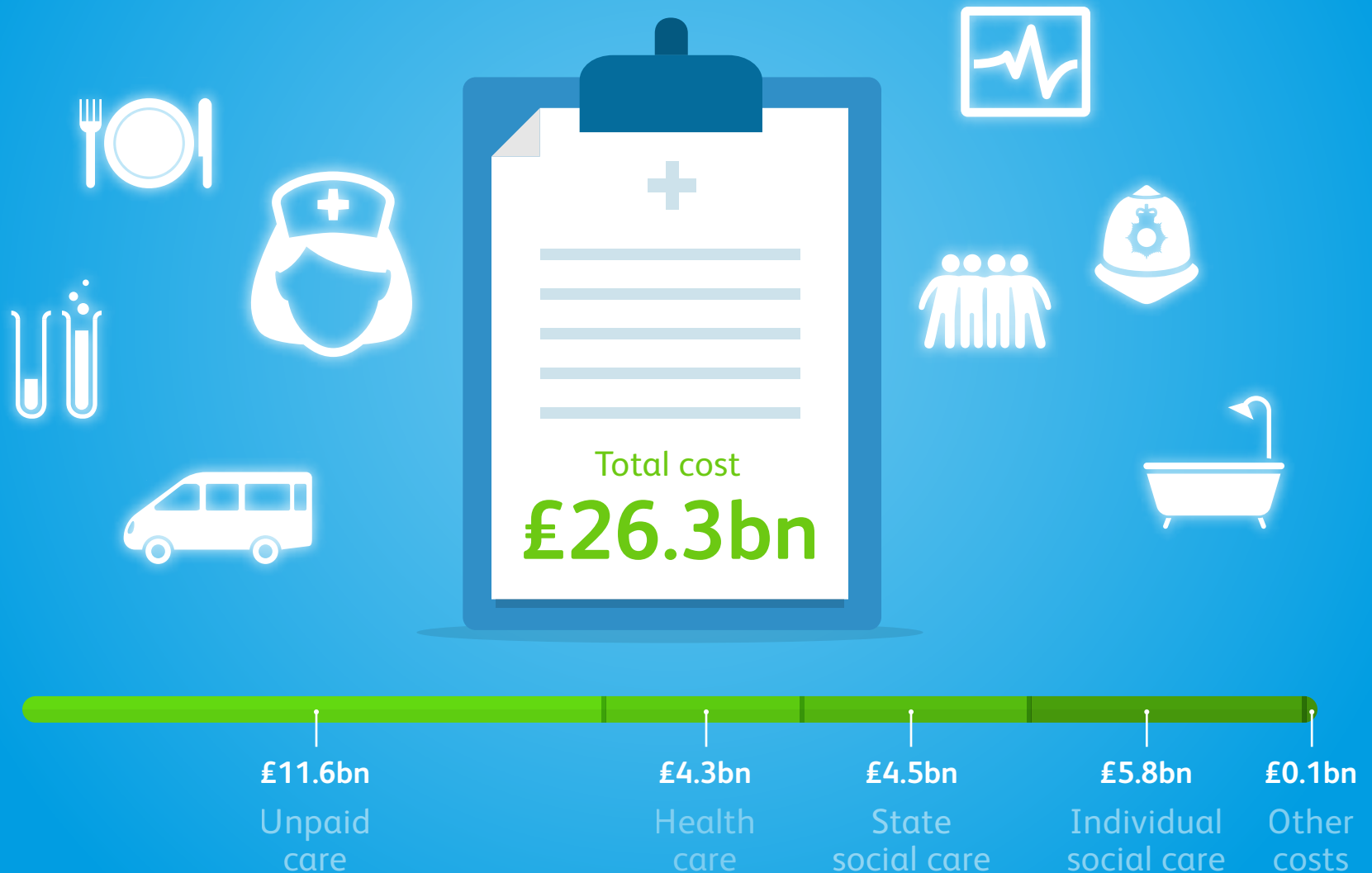


Dementia costs the UK £26.3 billion a year

That's enough to pay the annual energy bill of every household in the country.



Unpaid carers: overworked, under supported

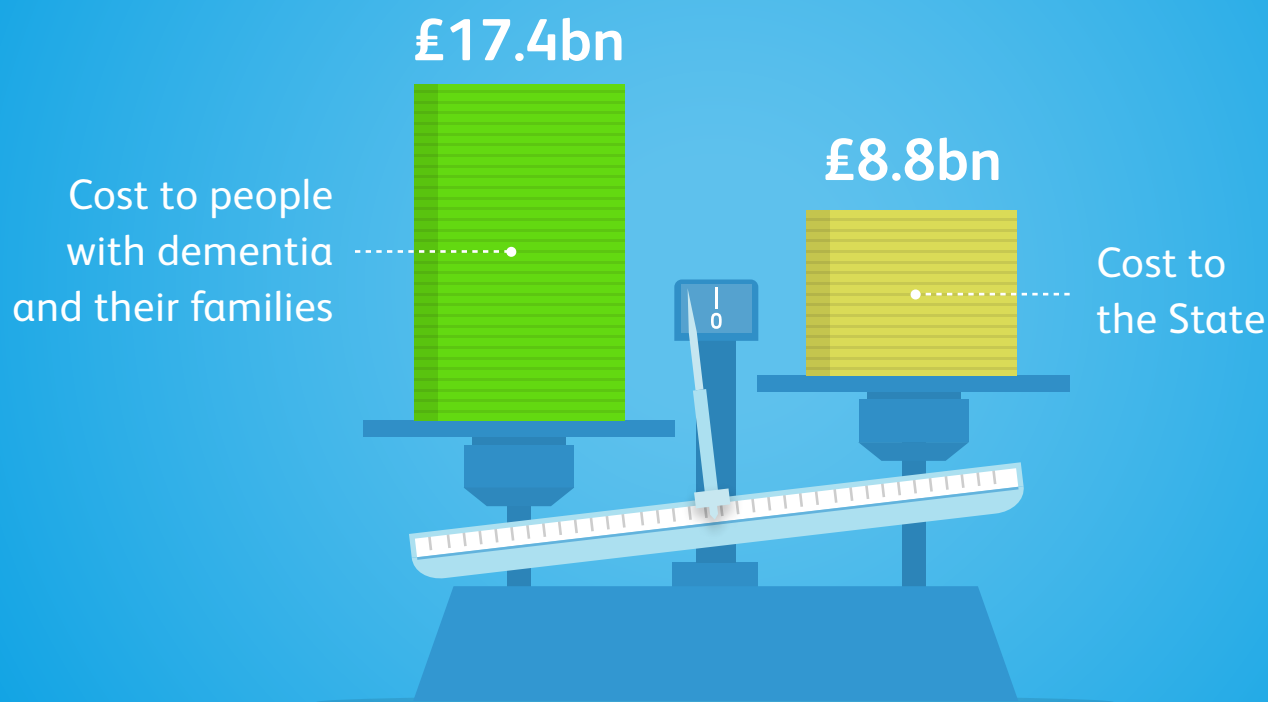


1,340,000,000 hours

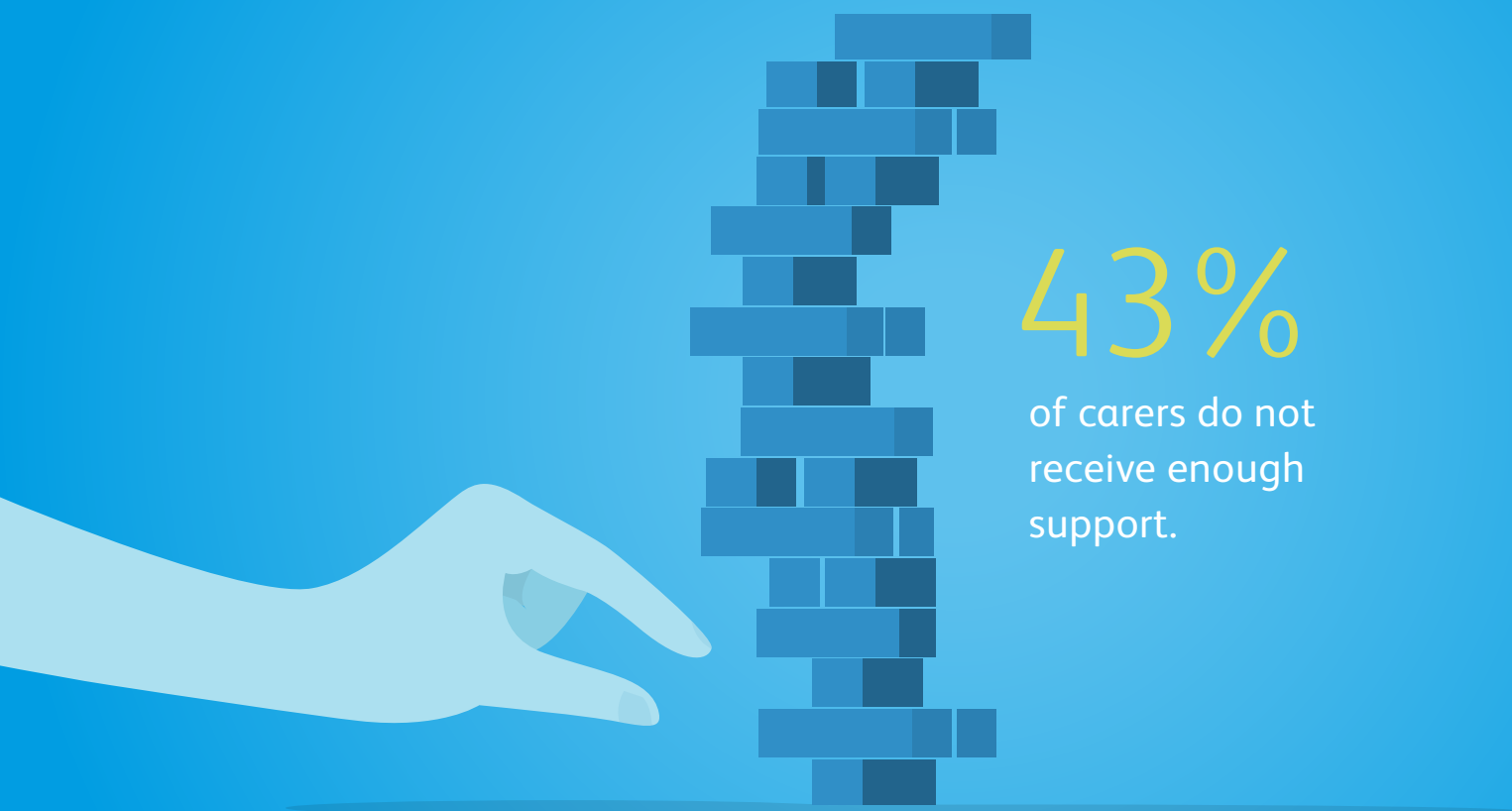
were spent caring for people with dementia in 2013.
That's more than 150,000 years.

Unpaid carers: overworked, under supported

Two thirds of the cost of dementia is paid by people with dementia and their families.



Unpaid carers: overworked, under supported

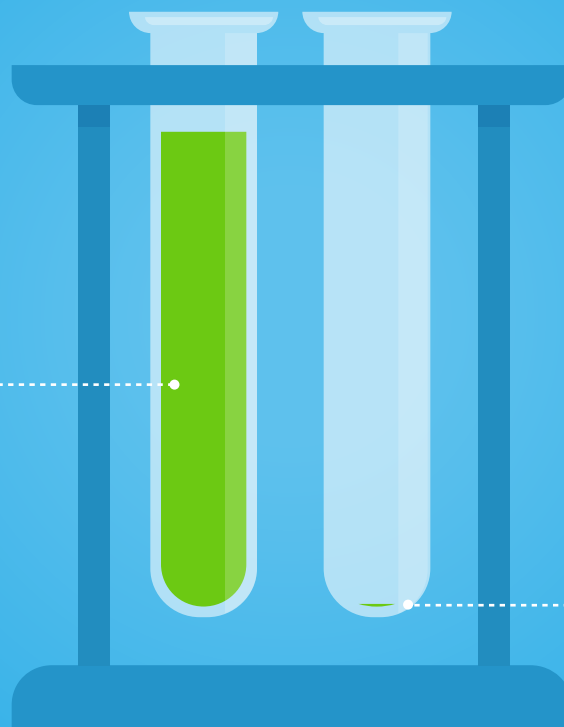


43%

of carers do not receive enough support.

We need greater investment in dementia research

Dementia costs over £30,000 per person with dementia each year...



...yet only £90 per person is spent on research.

Too many people with dementia aren't living as well as they could

61%

felt depressed or
anxious recently.



Too many people with dementia aren't living as well as they could

40%

felt lonely recently.



Too many people with dementia aren't living as well as they could

52%

do not feel they get enough support from the government.



Too many people with dementia aren't living as well as they could

34%

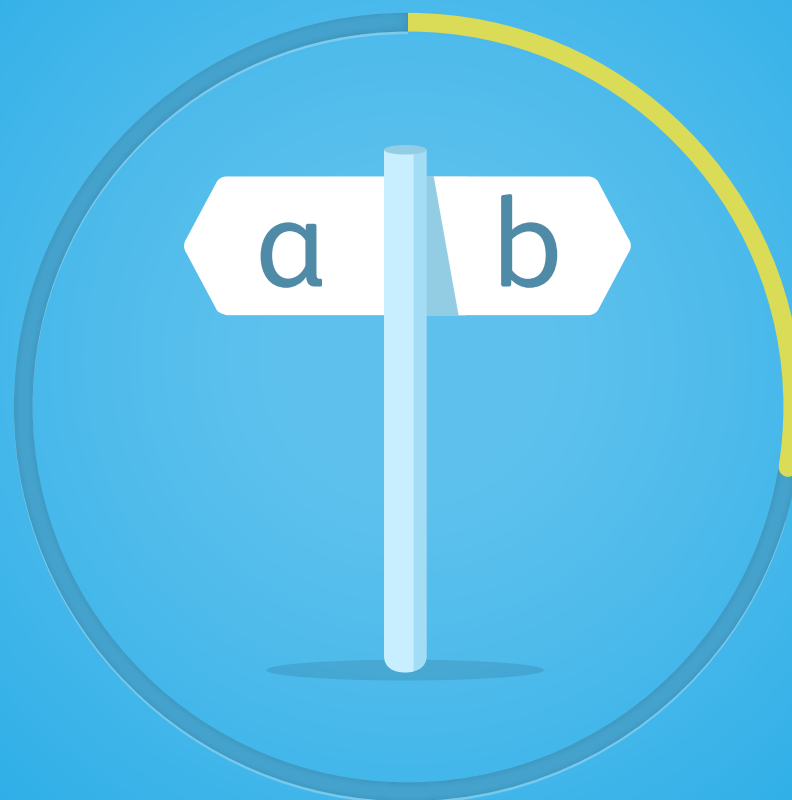
do not feel part of their community.



Too many people with dementia aren't living as well as they could

28%

are not able to make decisions about how they spend their time.



Too many people with dementia aren't living as well as they could

18%

are not living well
with dementia.



No two people with dementia are the same – services need to reflect the needs of individuals



7 out of 10

people are living with another medical
condition or disability as well as dementia.

No two people with dementia are the same –
services need to reflect the needs of individuals



1 out of 20

people living with dementia are under the age of 65.

850,000 people live with dementia in the UK

...if we don't take action this number is predicted to rise to over two million by 2051.

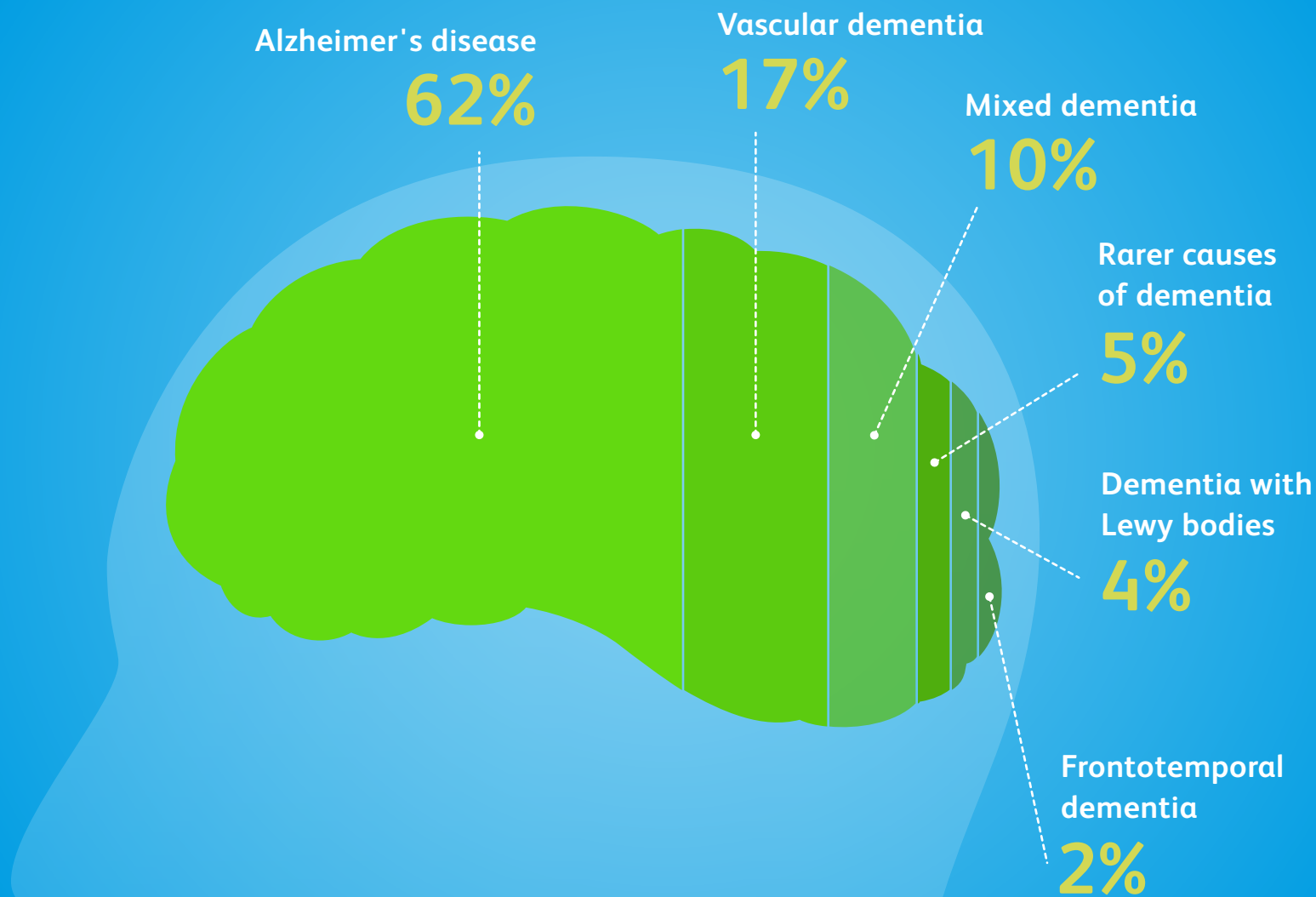


225,000 people develop dementia every year,
that's roughly one person every three minutes



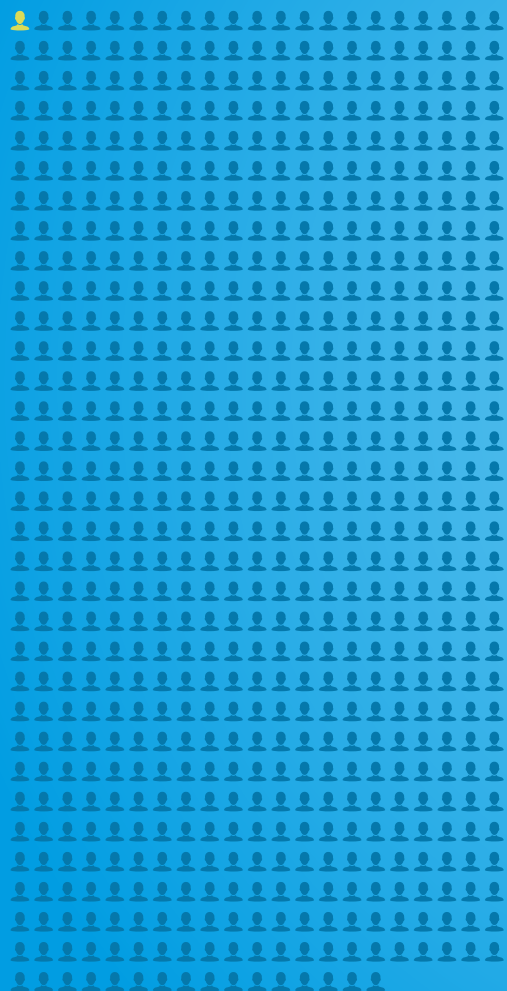
What is dementia?

Dementia is caused by diseases of the brain, the most common of which is Alzheimer's.



The risk of dementia increases with age

1 in 688 people
under 65 have dementia.



1 in 14 people
over 65 have dementia.



1 in 6 people
over 80 have dementia.



Dementia across the UK

England

685,812

Wales

43,477

Scotland

66,773

Northern Ireland

19,765

North East

34,289

North West

89,783

Yorkshire and Humber

67,630

East Midlands

60,254

West Midlands

73,406

East of England

82,516

London

72,009

South East

121,512

South West

84,413

